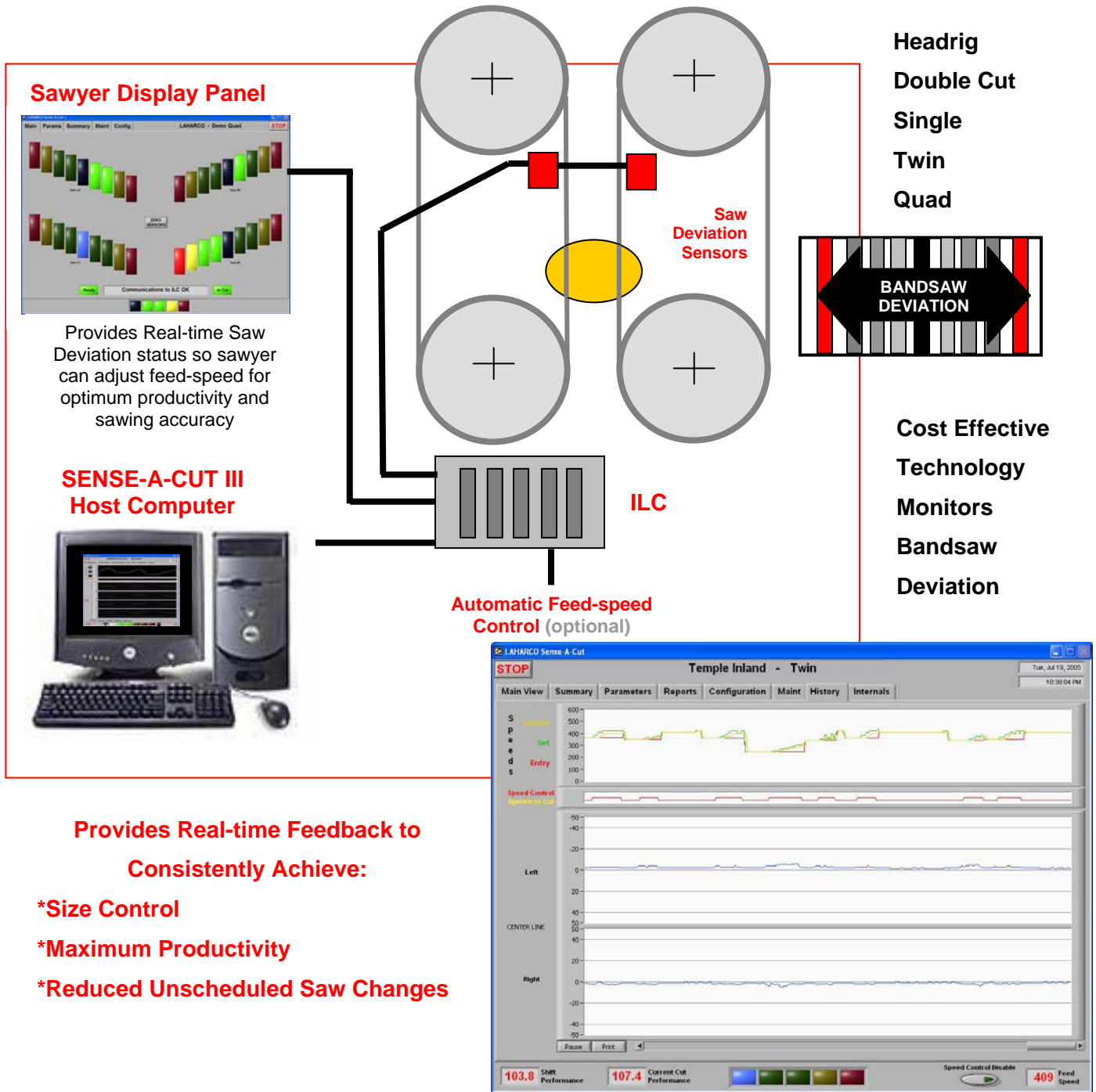


# Sense-A-Cut®

## Bandsaw Deviation Control System



L A C E Y - H A R M E R C O .

4270 NW YEON AVE • PORTLAND, OREGON 97210 • PH. 503-222-9992  
1-800-367-9992 • FAX 503-222-0073 • www.laceyharmer.com

# Sense-A-Cut®

The LAHARCO **Sense-A-Cut** System monitors and displays bandsaw deviation.

High precision fast analog proximity sensors measure saw deflection every 10 milliseconds or less. Sawmill personnel can set warning thresholds and error limits for both positive and negative deflections in 0.001 inch increments.

Responding to the mill-set warning and error limits on the Sawyer Display Panel, the sawyer can manually adjust feed speeds to maintain an optimum combination of throughput and cutting accuracy.

## The Smart Tool for Better Sawing

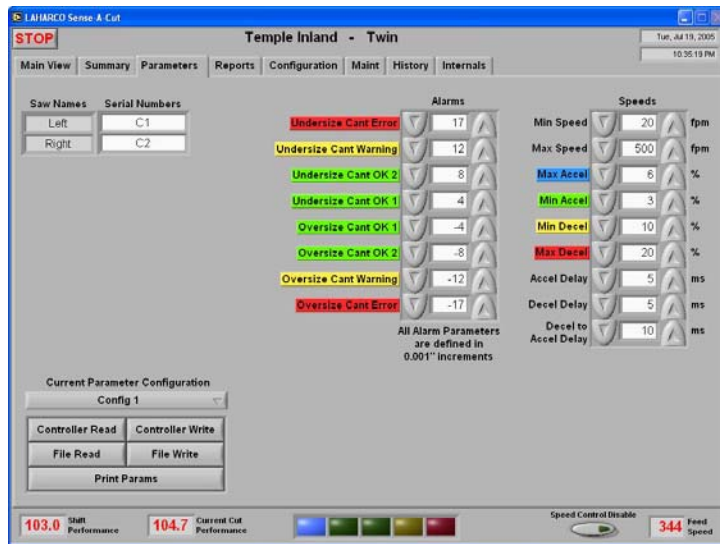
The **Sense-A-Cut III** system provides the sawyer with a visual touch screen display that instantly shows the deviation of each bandsaw. This information is provided as a "light bar" for each saw. A center Blue Light indicates minimal saw deviation. A light sequence of two Greens, one Yellow, and then one Red are located to the left and right of the center Blue light. These lights illuminate as saw deviation reaches the programmed warning and error levels, allowing the sawyer to adjust the feed speed based on sawing performance and keep saw deviation within the nominal range.

## Computer Analysis

The **Sense-A-Cut III** Host Computer provides detailed system data and trend analysis. A full-color graphic display shows the deflection of each saw over time, relative to the warning and error threshold parameters. All threshold parameters are easily set through the host computer interface. Saw performance data can also be saved for later review.

## Automated Feed-Speed Control

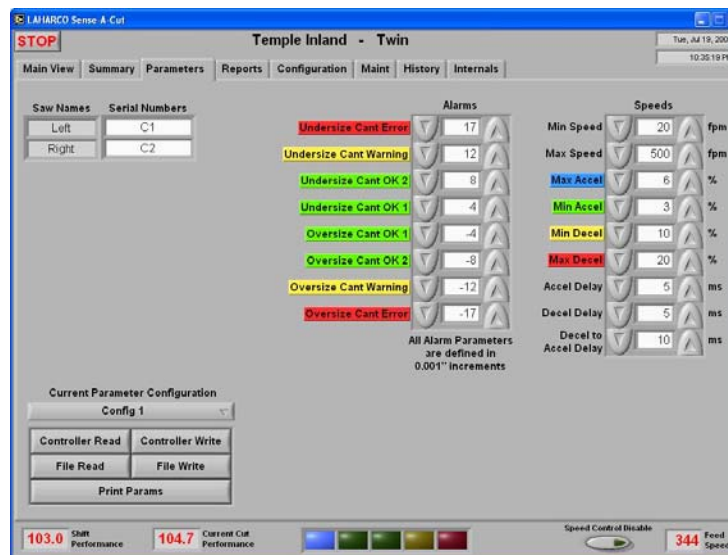
The **Sense-A-Cut III** has an optional automated feed-speed control system. This system can instantaneously increase or reduce feed speeds according to the programmed warning and error threshold limits.



## Machine Center Summary

Displays Error Data Summary for Each Saw

## Parameter Alarm and Speed Settings



## SPECIFICATIONS

<b>Voltage</b>	110/220 Volts
<b>Frequency</b>	50 / 60 Hz
<b>Power</b>	600 watts
<b>Alarm Limits</b>	8 per bandsaw
<b>Alarm Resolution</b>	0.001 inch
<b>Sampling Rate</b>	Less than 0.010 seconds (100 Hz)

<b>Alarm Range</b>	+/- 0.098 inches (sensor mounted 0.300" from saw)
<b>Inputs</b>	1 to 4 sensors
<b>Output</b>	Sawyer Display Panel Speed Control Alarms
<b>Computer Connectivity</b>	Ethernet Cable